

January 3, 2023

NOTICE TO ALL BIDDERS

From: Javier Luna, PE – Director of Facilities, Planning, and Construction
Imperial Community College District
380 E. Aten Rd., Building 2000,
Imperial, CA 92251

Re: SPORTS FIELD RESTROOM AND CONCESSION, WESTSIDE LIGHTING AND BORDER LINK
ANTENNA PROJECT
RFP No 22-23-02
ADDENDUM #04

This Addendum forms a part of the contract documents and modifies the original bidding documents. Addenda shall be noted as received and acknowledged on the Bid Proposal Form when submitted as outlined in the Bid Package referenced above.

Document Additions, Revision, and Clarifications:

1. Clarifications to the contract documents are hereby modified based on the following attachment by Sanders, Inc. (AOR), dated December 03, 2022.

END OF ADDENDUM NO. 04

December 03, 2022

IMPERIAL VALLEY COLLEGE
SPORTS FIELD RESTROOM AND CONCESSION WESTSIDE LIGHTING AND BORDERLINK
ANTENNA PROJECT RFP NO. 22-23-02

ADDENDUM #4

THE FOLLOWING ITEMS ARE LISTED AS CORRECTIONS OR CLARIFICATIONS TO THE
CONSTRUCTION DOCUMENTS.

SECTION 23 09 13 INSTRUMENTATION AND CONTROL DEVICES FOR HVAC

1. Section 23 09 13 Instrumentation and Control Devices for HVAC was added in Addendum no. 03 in error. Remove Section 23 09 13 INSTRUMENTATION AND CONTROL DEVICES FOR HVAC from the project manual.
 - a. Refer to Section 23 09 00 DDC Systems for HVAC Control specifications.

ARCHITECTURAL SITE DRAWINGS

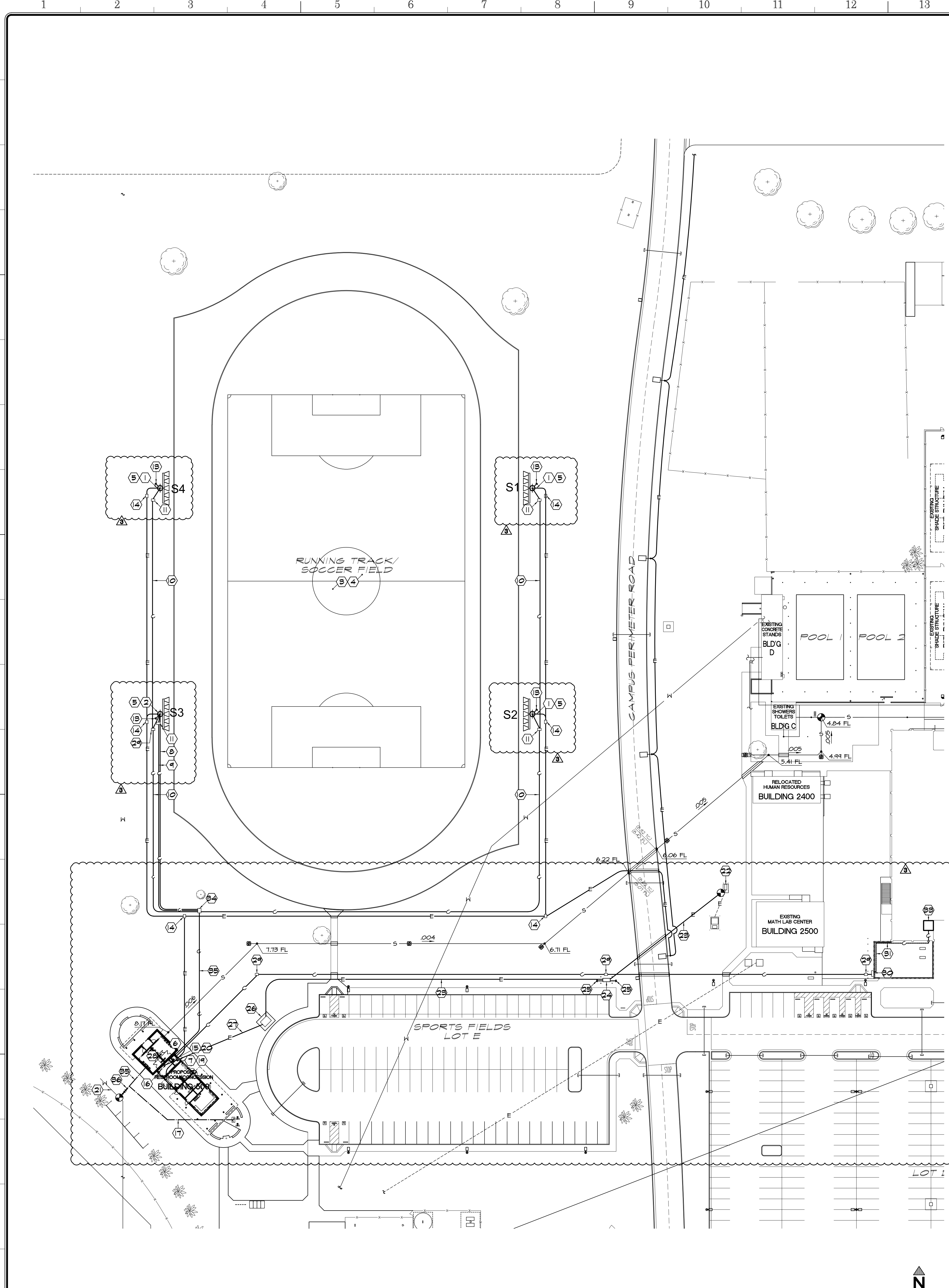
The following drawing was omitted from the plan set in error in Addendum no 03. The following sheet shall be added to the plan set and is attached to this Addendum.

1. AD-3_AS6 – SITE UTILITIES

END OF ADDENDUM #4

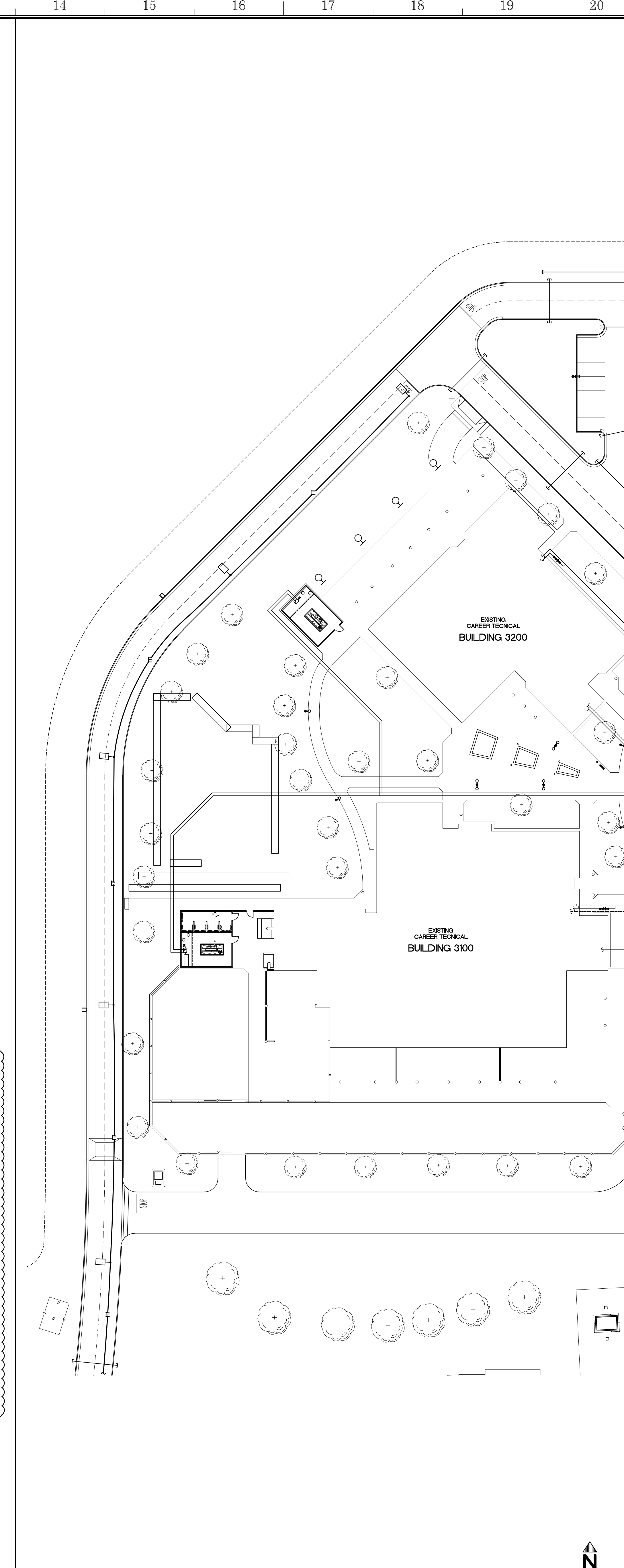


Jesus Antonio Aguilera



SITE UTILITIES PLAN - SOUTH

SCALE: 1" = 40'-0" A



SITE UTILITIES PLAN - NORTH

SCALE: 1" = 40'-0" B

APPROVALS

KEYNOTES:

- (1) PROVIDE MUSCO SPORT FIELD LIGHT STANDARD
- (2) PROVIDE MUSCO SPORTS FIELD LIGHT STANDARD FOR BORDERLINK ANTENNA
- (3) EXISTING PLAYFIELD - NO WORK
- (4) AREA TO BE LIGHTED BY SPORTS FIELD LIGHTS
- (5) PROVIDE CAMERA MOUNT FOR FUTURE VIDEO SURVEILLANCE CAMERAS MOUNTED AT 90 FEET ABOVE GROUND LEVEL, TOTAL (2) AT EACH POLE
- (6) PROVIDE 1" CONDUIT FROM LBU TO GPS UNIT MOUNTED ON EXTERIOR WALL ADJACENT TO LBU, FIELD VERIFY EXACT LOCATION OF GPS UNIT WITH ICQE TECHNICIAN ELECTRICAL DRAWINGS
- (7) IDF ROOM, LBU UNIT LOCATION, PROVIDE A 100 AMP CIRCUIT, SEE ELECTRICAL DRAWINGS
- (8) PROVIDE (2) 3" CONDUITS FOR POWER FROM IDF TO BASE OF POLE
- (9) PROVIDE (2) 2" CONDUITS FOR FIBER JUMPERS FROM AAU (ANTENNA) TO LBU AT IDF
- (10) PROVIDE (2) 2" FROM COMMUNICATIONS VAULT TO LIGHT STANDARD FOR FUTURE VIDEO SURVEILLANCE CAMERAS
- (11) PROVIDE A NEW 24"X36" CONCRETE COMMUNICATIONS PULL BOX
- (12) PROVIDE AND INSTALL A 24"X24"X6" FULLBOX
- (13) PROVIDE (3) 2" CONDUIT STUB OUTS AT BASE OF POLE FOR FUTURE CELL EQUIPMENT
- (14) PROVIDE AND INSTALL AN ELECTRICAL PULL BOX, SEE ELECTRICAL DRAWINGS
- (15) PROVIDE A 1.5 TON MINI SPLIT HVAC UNIT, C.U. CARRIER MN-38MAG18R-3 OUTDOOR AND A E.V. CARRIER MN-40MAG18B - 3 INDOOR, SEE ELECTRICAL DRAWINGS
- (16) LOCATION FOR MUSCO LIGHTING CONTROL CABINET
- (17) PROVIDE 1" PVC DOMESTIC WATER LINE FOR THE DRINKING FOUNTAINS
- (18) PROVIDE AND RUN SINGLE-MODE FIBER LINE THROUGH EXISTING CONDUIT AND COMMUNICATIONS VAULTS
- (19) PROVIDE A SINGLE-MODE OS2 FIBER RATED LINE FOR OUTSIDE USE THAT WILL RUN FROM THE IDF/LBU UNIT AT BUILDING 500 TO THE MDF AT BUILDING ##
- (20) PROVIDE A CONDENSATE LINE FROM THE MINI SPLIT CONDENSATE UNIT TO THE NEAREST SINK
- (21) EXISTING WATER LINE TO BE ABANDONED IN PLACE
- (22) EXISTING IID SECTOR AND SLEEVE #12432
- (23) PROVIDE AND INSTALL (1) 5" PVC SCHEDULE 40 PRIMARY CONDUIT PER IID REG
- (24) PROVIDE AND INSTALL 3# SECTOR SLEEVE AND 4 BARRIER POST PER IID REG
- (25) INSTALL (1) 5" PVC SCHEDULE 40 PRIMARY CONDUIT STUB OUT PER IID REG
- (26) PROPOSED 3# TRANSFORMER PAD BY IID - VERIFY LOCATION WITH IID
- (27) PROVIDE AND INSTALL (4) 4" PVC SCHEDULE 40 SECONDARY CONDUIT PER IID REG
- (28) PROVIDE AND INSTALL 800 AMP METER PANEL WITH CT METERING, SEE ELECT DNG
- (29) PROVIDE AND INSTALL A 24"X 36" COMMUNICATIONS PULL BOX, JENSEN 2426
- (30) PROVIDE AND INSTALL COMM PULL BOX WITH (2) 2" EMT CONDUIT A.F.F
- (31) PROVIDE AND INSTALL (2) 2" EMT CONDUIT A.F.F THROUGH MECHANICAL YARD
- (32) PROVIDE AND INSTALL COMMUNICATION PULLBOX FOR (2) 2" CONDUITS
- (33) EXISTING IDF LOCATION IN THE TICKET BOOTH - RIN AND CONNECT A NEW 12 PAIR SINGLE MODE FIBER TO THE EXISTING SPARE FIBER STRANDS
- (34) PROVIDE A 36"X48"X 32" COMMUNICATION PULL BOX
- (35) PROVIDE AND INSTALL MAIN COMMUNICATIONS CONDUITS FOR ALL LIGHT POLES
- (36) PROVIDE AND INSTALL NEW 2" DOMESTIC WATER LINE - SEE PLUMBING DWGS
- (37) PROVIDE A WATER BACKFLOW PREVENTER

LEGEND:

- S --- EXISTING SEWER LINE
- W --- EXISTING WATER LINE
- E --- EXISTING ELECTRICAL LINE
- C --- EXISTING COMMUNICATIONS LINE
- SD --- EXISTING STORM DRAIN LINE
- F --- EXISTING FIRE WATER LINE
- S --- NEW SEWER LINE - SEE PLUMBING DRAWINGS
- W --- NEW WATER LINE - SEE PLUMBING DRAWINGS
- E --- NEW ELECTRICAL LINE - SEE ELECTRICAL DRAWINGS
- C --- NEW COMMUNICATIONS LINE
- FIRE HYDRANT
- MANHOLE
- POWER POLE
- LIGHT STANDARD
- PROVIDE AND INSTALL NEW LIGHT STANDARD

NOTES:

1. CONTRACTOR SHALL REPAIR OR REPLACE ANY LINE BROKEN OR DAMAGED DURING COURSE OF PLACEMENT OF NEW LINES, CONSTRUCTION OF TRENCHING, OR HEAVY EQUIPMENT ON SITE AT NO COST TO OWNER.
2. PRIOR TO ANY EXCAVATION THE SITE SHALL BE VISITED BY A "DIS ALERT" COMPANY FOR THE PURPOSE OF LOCATING ALL UNDERGROUND UTILITY LINES.
3. CAP ALL STUBBED OUT CONDUIT FOR FUTURE.
4. PROVIDE PULL STRING FOR ALL CONDUIT.
5. ALL UTILITY LINES ARE EXISTING UNLESS NOTED OTHERWISE - PROTECT.
6. SAW CUT EXISTING SITE CONCRETE TO NEAREST CONTROL JOINT FOR PROPOSED UTILITIES, REPLACEMENT CONCRETE TO BE FLUSH PER (6) ABCX SIM.
7. PROVIDE TRENCHING PER (14) (15) ABCX ABCX

WORK BY OTHERS (ICQE):

1. PROVIDE FIBER FROM MDF TO POLE MOUNTED EQUIPMENT
2. PROVIDE DC CONDUCTORS FROM BEU TO POLE MOUNTED RRUS
3. PROVIDE GPS UNIT ON EXTERIOR HALL ADJACENT TO BEUMDF LOCATION, PROVIDE CABLING FROM GPS UNIT TO BEU
4. PROVIDE POLE MOUNTED ANTENNAS AND RRUS
5. PROVIDE BEU AT AT SHOWN LOCATION WITH AN ENCLOSURE

Sanders, INC.
Architecture/Engineering
 102 INDUSTRY WAY, SUITE A
 EL CENTRO, CA 92243
 760 353 5440 FAX 760 353 5442

Project Title
**IMPERIAL VALLEY COLLEGE
 RESTROOM/CONCESSION BUILDING**

Sheet Title
SITE UTILITIES PLAN

	Document Date	Project Number
	04-01-22	22-091V
Date Last Revised	Reference Sheet	
12-19-22	AS6	
	Sheet Number	
	AD-3_AS6	